

# SIRKOM - SRK-1080PW-A Player

## User Manual



## CONTENTS

1. Package Contents.....	1
2. Introduction.....	1
3. Features.....	2
4. Hardware Overview.....	3
5. Remote Control.....	4
5.1 Entering Text or IP Address.....	4
6. Start the SRK-1080PW-A Player.....	5
7. Setting Up.....	6
7.1 Network Setup.....	6
7.2 FTP Setup.....	8
7.3 Video Setup.....	9
7.4 Other Setup.....	9
8. Using the SRK-1080PW-A Player.....	11
8.1 Play Media Files on the CF Card.....	11
8.2 Download Function.....	14
8.3 Play the Media Files on the PC.....	17
8.4 Download/ Upload Media Files.....	20
8.5 RS-232 Function.....	23
9. Http Command Function.....	24
9.1 Player Control.....	25
9.2 Network Setup.....	26
9.3 Timer Setup.....	27
10. Optional Auxiliary Equipment.....	28
10.1 Play-Button Box (SIRKOM BB).....	28
10.2 Wireless Touch-Sensor Buttons.....	28
11. Troubleshooting.....	30

# 1. PACKAGE CONTENTS

1. SRK-1080PW-A Player
2. Remote Control
3. Audio Cable
4. Y.Pb.Pr Cable
5. S-Video Cable
6. Video Cable
7. Power Adapter
8. User Manual



SIRKOM SRK-1080PW-A



Remote Control



Audio Cable



Y.Pb.Pr Cable



S-Video Cable



Video Cable



Power Adapter



User Manual

# 2. INTRODUCTION

The SIRKOM SRK-1080PW-A Player is a digital media Player that plays movies, music, digital picture and WMV9 from CF memory card without a computer.

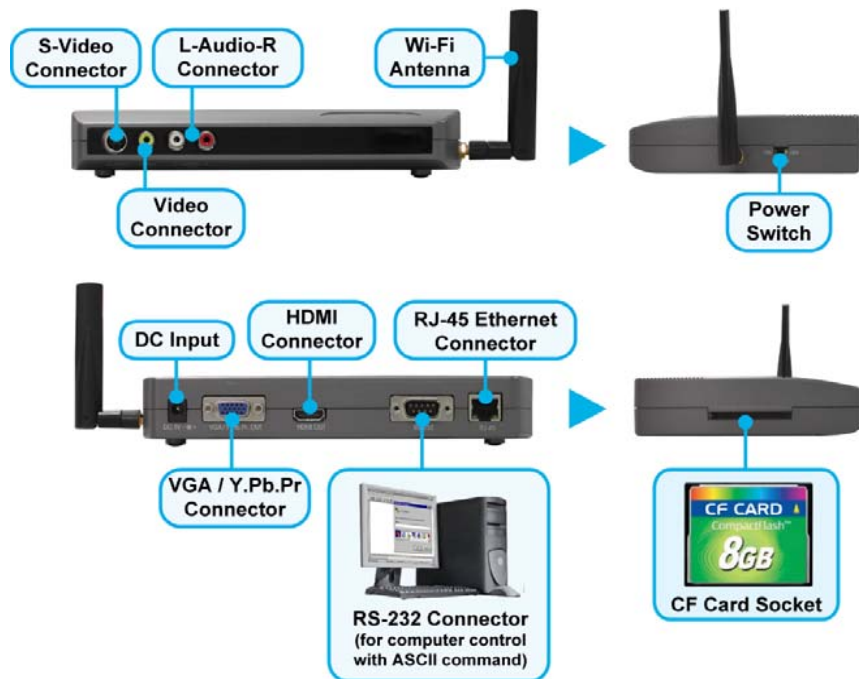
The SIRKOM SRK-1080PW-A Player supports High Definition movie hardware decode acceleration, presents for you the smoother and clearer picture, it supports high resolution video output such as 1080P / 1080i / 720P for movie theater quality video on a big screen. By connecting to S-Video, Y.Pb.Pr, VGA (resolution up to 1360 x 768), HDMI (1920 x 1080P) and Audio, you can play picture, movie and music on any display device.

The SIRKOM SRK-1080PW-A Player connects easily to a wired or wireless network. The SIRKOM SRK-1080PW-A Player features 802.11g / 802.11b wireless technology for data transfer speed up to 54Mbps / 11Mbps on a wireless network and can connect to a wired network at speed up to 100Mbps. This function provides you with maximum throughput for sharing and transferring digital media.

# 3. FEATURES

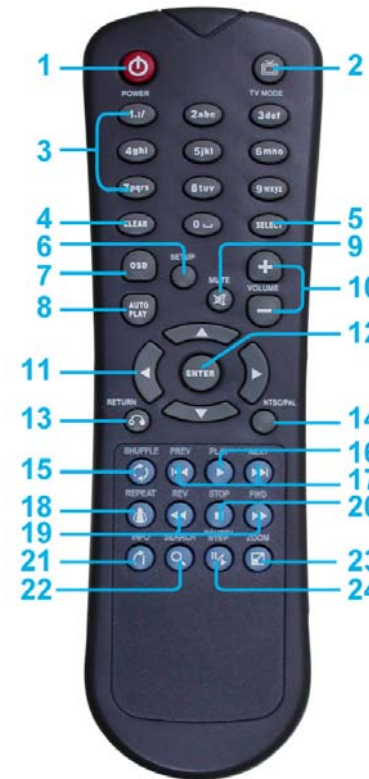
- Supports multiple file formats : Music, Picture, Movie and HD WMV9.
- Supports S-Video, Y.Pb.Pr, HDMI, VGA and Audio output.
- S-Video output supports Composite S-Video and Composite Y.Pb.Pr.
- HD Y.Pb.Pr output supports resolution :  
NTSC Mode(60Hz) : 480P/ 720P/ 1080i.  
PAL Mode(50Hz) : 576P/ 720P/ 1080i.
- HDMI Output : 480P/ 720P/ 1080i/ 1080P.
- VGA output supports resolution : 640x480/ 800x600/ 1024x768/ 1280x1024/ 1360x768.
- Supports RS-232 port for computer control with ASCII command (play, stop, pause...etc).
- Connect using an Ethernet network cable at up to 100Mbps.
- Easily connect to your wireless network using 802.11g at up to 54Mbps. 802.11b is compatible at 11Mbps.
- Wireless Signal Range: Indoors: Up to 20 – 25 meters.  
Outdoors: Up to 60 – 80 meters.
- Supports WEP (Wired Equivalent Privacy) encryption technology used by wireless device.
- The source of HD WMV9 MP@HL (Main Profile / High Level) supports resolution up to 1920x1080 (1080P) and the maximum bit rate is 12Mbps.
- Supports CF memory cards. (Suggest using the high speed (150X) CF card)
- **Supports HTTP command function.**
- **Supports Auto Key Lock function.**
- **Exports the Configuration Value:** You can export the configuration value to the CF card. The configuration can be modified on your PC, and can be applied to the SRK-1080PW-A Player or others.
- **Compatible with Windows Media Player 11:** Play media files stored in a network computer.
- **Supports FTP Auto Download Function:** Connect to Remote FTP server and download data to the CF card automatically.
- **Supports Download Pause / Resume Function:** Continue unfinished downloads upon next session.
- Embedded FTP Server.
- Supports NTP Network (G.M.T) Timer.
- Supports Universal Plug and Play (UPnP) and DHCP.
- **Supports SLIDE SHOW Function (interval time with 10/ 15/ 30/ 60 seconds).**

## 4. HARDWARE OVERVIEW



- **S-Video Connector** : Connects to devices that support S-Video input. (HDTV、 projector)
- **Video Connector** : Connects to devices that support Video input. (HDTV、 projector)
- **Audio Connector** : Connects to sound input. (HDTV with amplified speaker)
- **Power Switch** : Toggle between main power on & off.
- **DC Input** : For the power adapter. (DC 12V / 1.5A)
- **VGA/ Y.Pb.Pr Connector** : Connects to devices that support VGA/ Y.Pb.Pr input.
- **HDMI Connector** : Connects to devices that support HDMI input.
- **RS-232 Connector** : Used for computer control with ASCII command.
- **RJ-45 Ethernet Connector** : Connects to router or PC by RJ-45 Cable.
- **CF Card Socket** : For CF memory card.
- **Wi-Fi Antenna**

## 5. REMOTE CONTROL



- 1 Power on/ off
- 2 Select the output mode
- 3 Numeric Key
- 4 Delete last entry
- 5 Select a function or to play the selected file
- 6 Open the setup menu Mute sound
- 7 OSD display function on/ off
- 8 Auto-play function on/ off
- 9 Mute sound
- 10 Volume up/ down
- 11 Move the cursor
- 12 Confirm the selection/ entry
- 13 Go back one layer
- 14 Select the TV type (NTSC/ PAL)
- 15 Shuffle on & off
- 16 Play the file selected
- 17 View the previous/ next file  
Play the previous/ next file if in playback
- 18 Select the repeat mode
- 19 Rewind/ forward movie or music files
- 20 Stop playback
- 21 Show the information of the file selected
- 22 Search video (movie) timeframe
- 23 Zoom in/ out on the movie or picture
- 24 Pause the playback or play frame by frame

### 5.1 ENTERING TEXT OR IP ADDRESS

- Keys need to be pressed multiple times to enter the letter corresponding to that key.  
**For Example** : To enter the letter “a”. you would press the “2” button twice.
- **Enter The IP Address**  
**For Example** : To enter the IP address”192.168.100.100”.  
**Step 1** : Press “1” once, then “1” is displayed, and the color of “1” is orange.  
**Step 2** : When the color of “1”turns white, press “9” once, then “9” is displayed.  
**Step 3** : Repeat steps 1 and 2 to enter and complete the IP address.

## 6. START THE SRK-1080PW-A

### ■ Power On

- Insert the CF memory card that has Picture, Music, Movie or WMV9 files.
- Press the “POWER” button to power on the SIRKOM SRK-1080PW-A Player, then press the “TV MODE” button to select the output mode.

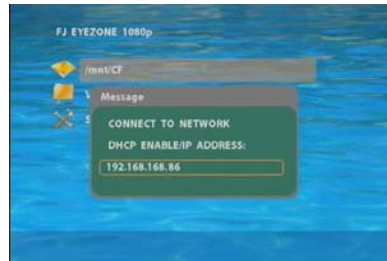
### ■ Status After Power On

- **Status 1** : If the “AUTOPLAY (Movie or Picture)” function is enabled and there are movie or picture files in the CF card, the SIRKOM SRK-1080PW-A Player will auto play movie or picture files on the CF card after power on.
- **Status 2** : If the “AUTOPLAY” function is disabled, after power on the main menu will appear as shown in the following figure. There are two groups in the main menu (“/mnt/CF” and “SETUP”).



### NOTE :

1. The pop-up window that shows the state of wireless will appear later, if the wireless network is enabled when the SIRKOM SRK-1080PW-A Player is turned on.
2. The pop-up window that shows the IP address will appear later, if DHCP mode is selected when the SIRKOM SRK-1080PW-A Player is turned on.



- **Power Off** : Press the “POWER” button again to power off.

## 7. SETTING UP

- In the main menu, please using the “▼” button on remote control to select the “**SETUP**” item, then press the “ENTER” button. You will be presented with the SIRKOM SRK-1080PW-A Player settings screen.
- You can also press the “**SETUP**” button on remote control to directly open the settings screen. (If there is file that is being play, please stop first.)
- There are four groups of sub-menu in the main menu (“Network Setup”, “FTP Setup”, “Video Setup” and “Other Setup”).
- In the settings screen, you can use the “▲、▼、◀、▶” buttons to select an item, and press the “ENTER” button to confirm the selection.
- Press the “**SETUP**” button on remote control to save and quit the settings screen.



### 7.1 NETWORK SETUP



- **Network with** : Select your network connection Disable/ RJ45/ Wi-Fi.
- **IP Assigned by DHCP** : If you have a DHCP-enabled router, please select “On”, then the router will automatically assigns an IP address to the SIRKOM SRK-1080PW-A Player. If you don’t have a DHCP –enabled router, select “Off” and type the network information in “**Assign IP Address**”.
- **Assign IP Address** : If the SIRKOM SRK-1080PW-A Player is connected to a network without a DHCP server or you want to use Local FTP Server function, type the fixed IP address, Mask, Gateway and DNS for the SIRKOM SRK-1080PW-A Player.

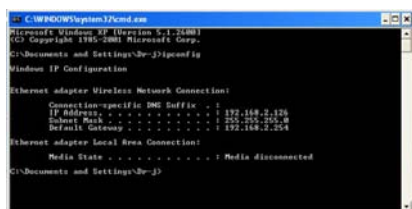
**PS. Refer to 5.1 for how to enter IP address by remote control.**

## 7.1 NETWORK SETUP (continued)

**NOTE :** Before setting the IP address, Mask, Gateway and DNS, check the network information of your PC. Please follow the steps below to get the network information of your PC.

**Step 1 :** Click on “Start“ → “Run“ and type in ”command“, then press “ENTER”.

The MS-DOS window will appear, type in ” ipconfig “ and then press “ ENTER “ to get the network information.



```
C:\WINDOWS\system32\cmd.exe
Microsoft Windows [Version 5.1.2600]
(C) Copyright 1985-2001 Microsoft Corp.

C:\Documents and Settings\br>ipconfig

Windows IP Configuration

Ethernet adapter Wireless Network Connection:

   Connection-specific DNS Suffix  : .
   IP Address . . . . . : 192.168.2.130
   Subnet Mask . . . . . : 255.255.255.0
   Default Gateway . . . . . : 192.168.2.254

Ethernet adapter Local Area Connection:

   Media State . . . . . : Media disconnected

C:\Documents and Settings\br>
```

**Step 2 :** Assign IP Address, Mask (Subnet Mask) and Gateway (Default Gateway)

for the SIRKOM SRK-1080PW-A Player.

Enter the same values of the Subnet Mask and Gateway, and be careful not to enter the values of IP address that are already used by other devices on the network.

- **Media Player 11 Server :** Enable/ disable the Media Player 11 server.
- **Wi-Fi SSID :** Select the SSID that is being used by your wireless network.

**NOTE :** If your router does not list its SSID, then it is a hidden network, and the SIRKOM SRK-1080PW-A Player cannot detect it. You must manually enter your wireless settings in “Wi-Fi Encryption Setup”.

- **Encryption Mode :** Disable/ enable the encryption function. SIRKOM SRK-1080PW-A Player supports WEP (Wired Equivalent Privacy) encryption technology used by wireless device.
- **Wi-Fi Encryption Setup**

- **SSID :** The SSID name selected in “Wi-Fi SSID” appears here. You can also enter SSID name manually here.

- **Password :** To connect to an encrypted wireless device, the password you enter here must match the password of the device exactly. (The SIRKOM SRK-1080PW-A

Player can use 16bit Hex WEP protection)

**NOTE :** The SSID and password are case-sensitive.

- **Wi-Fi Connection Status :** Shows the Wi-Fi information (SSID Name/ Quality/ Channel/ Connection Speed).

## 7.2 FTP SETUP



- **Local FTP Server :** Turn on/ off the SIRKOM SRK-1080PW-A Player server.  
( If you use the Eyexone SRK-1080PW-A Player server, please disable the DHCP function and input a fixed IP address, Mask, Gateway and DNS of the SIRKOM SRK-1080PW-A Player. )
- **Local FTP Server Setup :** To set the “Port”, “User ID” and “Password” of the SIRKOM SRK-1080PW-A Player.  
(The Default Port : 21, User ID : root, Password : admin)
- **FTP Auto Download :** Enable/ Disable the FTP auto download function.
- **Remote FTP Download Setup**
  - **Server IP :** Type in the domain name of the FTP site or IP address as was given to you by your Web hosting provider.
  - **Port :** The default port for FTP is 21. In most cases you should not change this number.  
If the FTP site uses a port other than 21, you should enter the correct port.
  - **User ID :** Type the user name of the Remote FTP server.
  - **Password :** Type the Password of the Remote FTP server.
  - **FTP Path :** Enter the folder path that you want to share.
- **NTP Server:** Enable/ Disable the NTP server function.
- **Timer Setup:** Set the NTP Server, Local Time (only for B1080PW-2) and Auto Download Time here.
  1. It is recommended to use 204.152.184.72 as the IP address for the NTP server.
  2. Time Zone must be set properly for the auto-download function.
- **Local HTTP Server :** Enable/ Disable the HTTP command function.
- **Local HTTP Server Setup :** To set the “Port”, “User ID” and “Password” of the SIRKOM SRK-1080PW-A Player. (The Default Port : 80, User ID : root, Password : admin)

**NOTE :** Press the “SETUP” button on the remote control to save the settings, and it will auto exit the settings screen, then restart the SIRKOM SRK-1080PW-A Player.

## 7.3 VIDEO SETUP



- **TV Standard:** Select the output TV video format (NTSC / PAL).
- **NTSC Active Output :** Select the output mode. (HDMI/ SD Video/ VGA/ HD Y.Pb.Pr)  
You can also press directly the “TV MODE” button on the remote control to select output mode.
- **Aspecl-ratio :** Select TV mode 4:3 or 16:9.
- **HDMI :** Select the HDMI output resolution among 480i / 480p/ 720p / 1080i/ 1080p.  
Select the “Auto EDID”, the SIRKOM SRK-1080PW-A Player will scan the display device connected and set the correct resolution automatically.
- **SD Video :** Select the SD output mode. (“Video/ S-Video” or “Y.Cb.Cr”)
- **VGA 60Hz :** Select the VGA output resolution.  
(640\*480 / 800\*600/ 1024\*768/ 1280\*1024/ 1360\*768)
- **HD Y.Pb.Pr 60Hz :** Select the Y.Pb.Pr output resolution among 480p / 720p / 1080i.

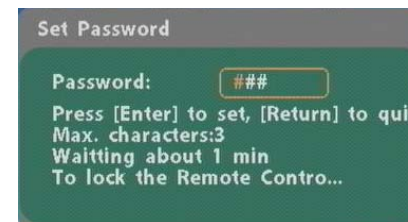
## 7.4 OTHER SETUP



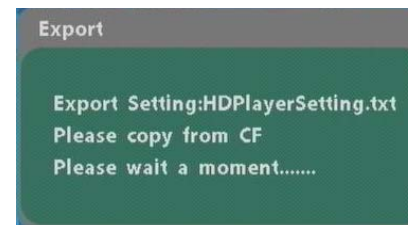
- **Play OSD Display :** Enable/ disable the OSD display.
- **Auto Play**
  - Movies : Auto play movie files on the CF card after power on.
  - Pictures : Auto play picture files on the CF card after power on. (slideshow function)
  - Off : Turn off the Auto Play function.
- **SlideShow Interval:** Set the time each photo is shown to 10, 15, 30 or 60 seconds.
- **SPDIF Out :** Supports Analog / DPCM audio output.
- **Speakers Out :** Supports 2 channel amplifier output.
- **Lock Remote Controller :** Enable/ disable the auto key lock function. (The SRK-1080PW-A Player will auto lock when there is no further input for 1 minute.)

## 7.4 OTHER SETUP (continued)

- **Lock Password Setup :** Press the “Enter” button to open the “Set Password” window. Enter the password with numeric buttons and press the “Enter” button to save the new password (The default password: 123).



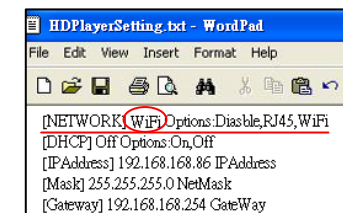
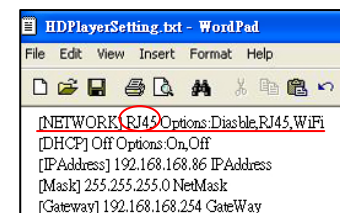
- **Export Setting File :** Press the “Enter” button to export the configuration value to the CF card.



- Copy the file “HDPlayerSetting.txt” on CF card to your PC. Use the “Wordpad” to open the file, and you can see all the configuration value of SRK-1080PW-A Player.
- You can modify directly the configuration value on your PC.

**Example. [NETWORK] RJ45 Options:Diastble,RJ45,WiFi**

“**RJ45**” is the current setting, you can modify directly to “**WiFi**” (Disable, RJ45 and WiFi are the other settings that you can change).



- Copy the completed file “HDPlayerSetting.txt” from PC to CF card. Insert the CF card to the SRK-1080PW-A Player, the SRK-1080PW-A Player will apply the new settings automatically.

- **Play Button :** Only for used with play buttons. The SIRKOM SRK-1080PW-A Player supports two options (Repeat Default / Repeat All) when the demo file finishes playing.

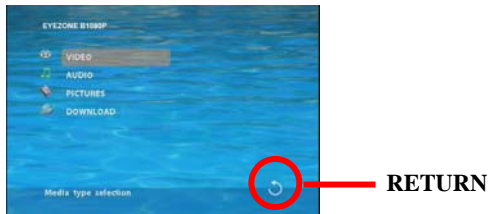
## 8. USING THE SRK-1080PW-A


### 8.1 PLAY MEDIA FILES ON THE CF CARD

**Step 1 :** Insert the CF card with media files (picture, music, movie), then turn on the SIRKOM SRK-1080PW-A Player and press the “ENTER” button on the remote control when “mnt/CF” is highlighted to take you into the CF card.



**Step 2 :** Select the type of data (VIDEO/ AUDIO/ PICTURES) you want to play, and then press the “ENTER” button on remote control to take you into the “VIDEO LIBRARY”, “AUDIO LIBRARY” or “PICTURE LIBRARY”.



**PS.** If the symbol  (return) appears on the screen, you can use “RETURN” button of the remote control to go back one layer.

**Step 3 :** Select the file you want to play, and press “ENTER” or “PLAY” button on the remote control to play the file.



**VIDEO LIBRARY**



**AUDIO LIBRARY**



**PICTURE LIBRARY**

### 8.1.1 Using the Remote Control When Media File Is Playing

- **SETUP :** Press the button to adjust the brightness, contrast or saturation while the **movie** or **picture** is playing. With the “+ VOLUME –” button.
  - **First Press :** Adjust the brightness.
  - **Second Press :** Adjust the contrast.
  - **Third Press :** Adjust the saturation.



**Brightness**

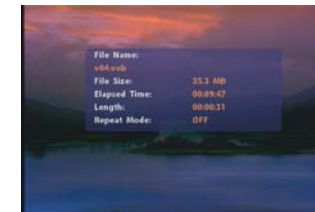


**Contrast**



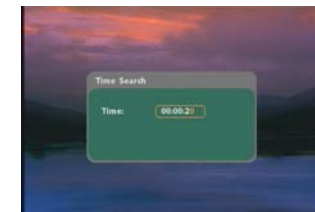
**Saturation**

- **MUTE :** Mute the sound while the movie or music is playing.
- **+ VOLUME - :** Increase/ decrease the volume while the **movie** or **music** is playing.
- **SHUFFLE :** Turn on/ off the shuffle function.
- **PREV / NEXT :** Play the previous/ next file.
- **REPEAT :** Select the repeat mode.
- **REV / FWD :** Rewind/ forward movie or music file.
- **STOP :** Stop playing, and go back one layer.
- **INFO :** Display the file information.



**File Information**

- **SEARCH :** Search video (movie) timeframe  
Press the “SEARCH” button, and enter the initial time that you want to start at, then press the “ENTER” button to play.



- **PAUSE/STEP** : Pause the playback or play frame by frame.
- **ZOOM** : Zoom in/ out on the movie or picture.



**Original Size**



**First Press : ZOOM 01**



**Second Press : ZOOM 02**



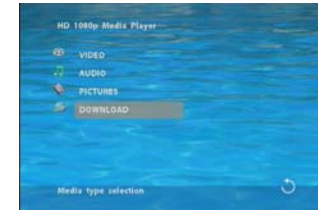
**Third Press : ZOOM 03**

## 8.2 DOWNLOAD FUNCTION

Before it downloading files from the FTP server, SIRKOM SRK-1080PW-A Player will delete all contents on CF card except the file on the CF card and the FTP server are the same.

### 8.2.1 Manual Download Function

- Please confirm that the SIRKOM SRK-1080PW-A Player is already connected to the network. (Refer to 7.1 Network Setup)
- Please use the “▼” button to select the “DOWNLOAD” item, and press “ENTER” button. The SIRKOM SRK-1080PW-A Player will connect to the FTP server and download files automatically.
- Before download files, SIRKOM SRK-1080PW-A Player will delete all contents on CF card first.



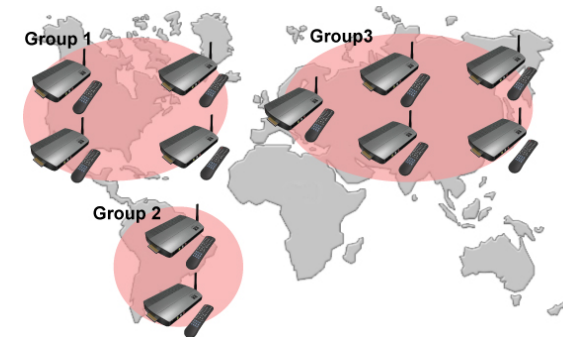
- The pop-up window that shows the status of download and the screen saver will appear while the SIRKOM SRK-1080PW-A Player is downloading files. After finishing downloading files, the SIRKOM SRK-1080PW-A Player will display the files automatically.



**Screen Saver**

### 8.2.2 Auto Download Function

- If there are more than one SIRKOM SRK-1080PW-A Player is, you can use ftp tools to divide them into different regional group.





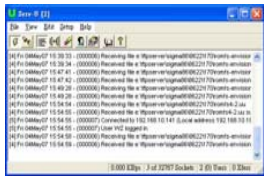
For example.

- Use the ftp tool “**Serv-U**” to divide into three groups, and setup the “User name”, “Password” and “FTP port number” of three groups for login ftp server.

**Group 1 :** User name : ipmedia Password : 0000 FTP port number : 21

**Group 2 :** User name : ipmedia2 Password : 1111 FTP port number : 21

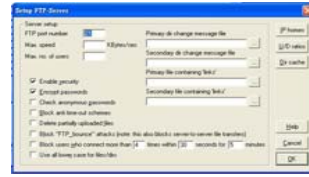
**Group 3 :** User name : ipmedia3 Password : 2222 FTP port number : 21



FTP tool : Serv-U



Setup “User name”, “Password” and “FTP port number”



- Enter the “**Remote FTP Download Setup**” window of SIRKOM SRK-1080PW-A Player, and then type the same “User name (User ID)”, “Password” and “Port”. The SIRKOM SRK-1080PW-A Player in group 1, please type the “User ID : ipmedia”, “Password : 0000” and “Port : 21”.



- Please enter the “**Network Timer NTP**” window of SIRKOM SRK-1080PW-A Player, and set up the “**Download Time**”, then the SIRKOM SRK-1080PW-A Player will download all the files from the FTP server at the designated time.



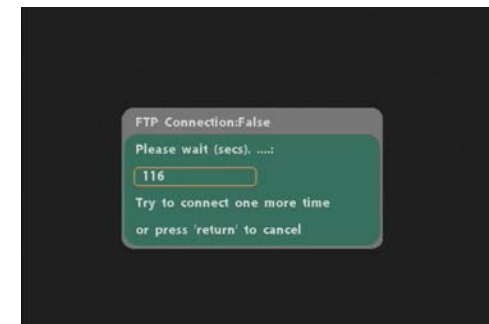
**NOTE :** The filename of the media files in FTP server cannot have any spaces.

### 8.2.3 Download Pause / Resume

SIRKOM SRK-1080PW-A Player supports download pause/resume. You can press the “STOP” button to pause downloading media files. The SIRKOM SRK-1080PW-A Player can continue unfinished downloads upon next session.



**NOTE :** If the network connection is unstable or broken, a pop-up window will appear as shown below. The SIRKOM SRK-1080PW-A Player will attempt to resume downloading in 2 minutes. The user can terminate the download by pressing the “RETURN” button.



## 8.3 PLAY THE MEDIA FILES ON THE PC

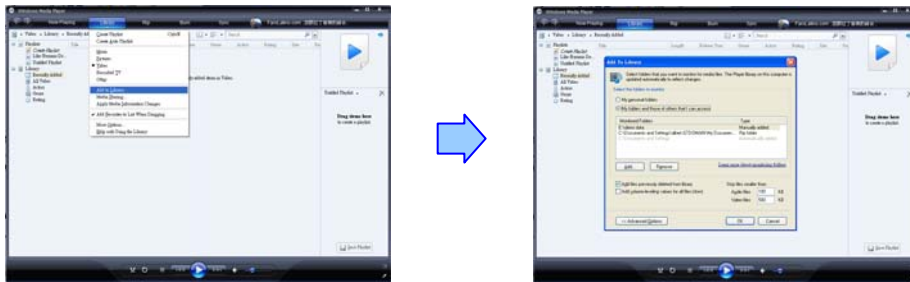
### ■ Using Windows Media Player Version 11 ( Windows XP/ Vista only )

**Step 1 :** Please download and install Windows Media Player Version 11 on your PC first.

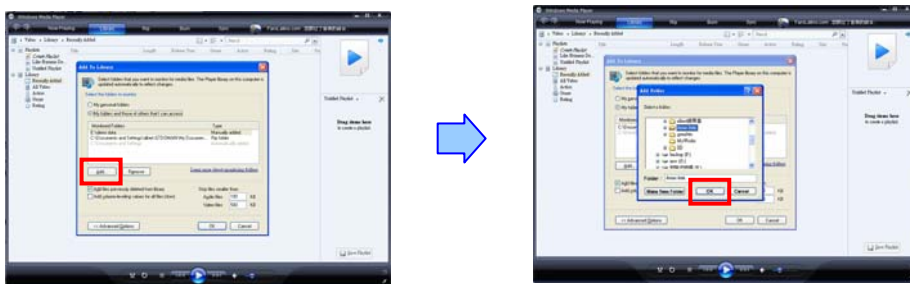
**Step 2 :** Launch the Windows Media Player Version 11 and the window below will appear.



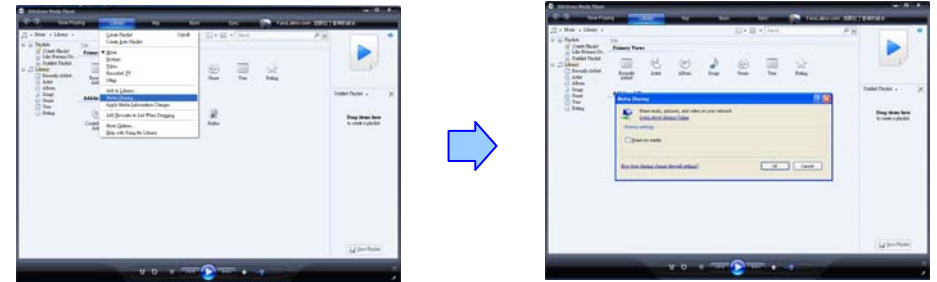
**Step 3 :** Click the “Library” tab, and then click “Add to Library”.



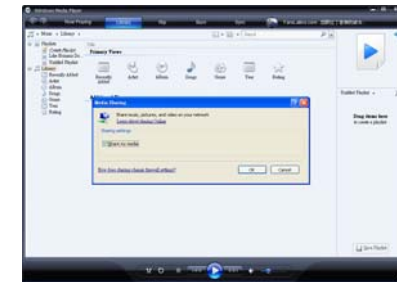
**Step 4 :** Click “Add” and select the folder containing the media files you want to share, then click “OK”.



**Step 5 :** Click the “Library” tab, and then click “Media Sharing”.



**Step 6 :** Select the “Share my media”, and click “OK”.



**Step 7 :** In the Media Sharing dialog box, select the “Share my media” check box.



**Step 8 :** Confirm that the SIRKOM SRK-1080PW-A Player is connected to the network.

In the list of devices below the “Share my media to” check box, select the device ( SIRKOM SRK-1080PW-A Player), and click “Allow” to share the media files.



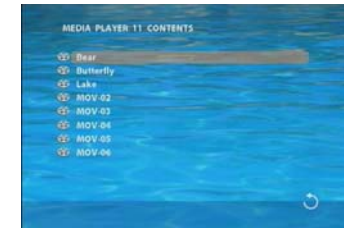
**Step 9 :** The shared folder will appear on the screen of the SIRKOM SRK-1080PW-A Player. Select the folder and click the “ENTER” button on remote control to go into the folder.



**Step 10 :** Select the type of data (VIDEO/ AUDIO/ PICTURES) you want to play, and then press the “ENTER” button on remote control.



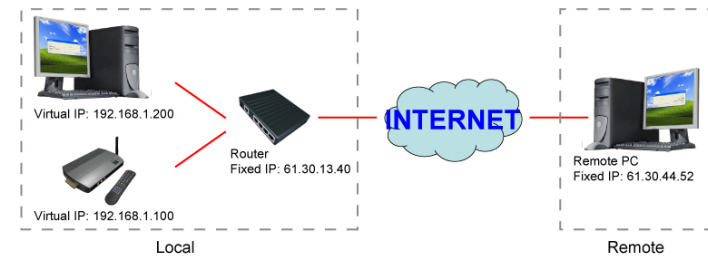
**Step 11 :** Select the file you want to play, and press “ENTER” or “PLAY” button on the remote control to play the file.



**NOTE :** If the media files shared from PC are not listed on screen, restart your PC.

## 8.4 DOWNLOAD / UPLOAD MEDIA FILES

**Method 1 : Connect by IE Browser**



**Step 1 :** Confirm the “**IP Assigned by DHCP**” has been disabled, then enter the “**SIRKOM Network Setup**” item, and type IP Address (example. 192.168.1.100), Mask and Gateway for the SIRKOM SRK-1080PW-A Player (refer to 7.1).

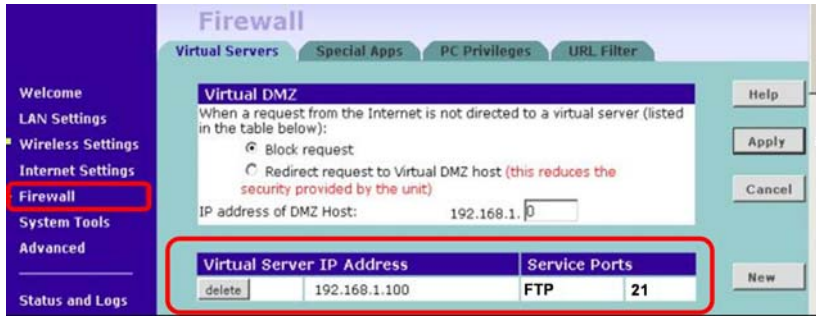


**Step 2 :** Confirm the “**Local FTP Server**” function has been enabled (refer to 7.1).



**Step 3 :** Please setup your router or firewall, and open a port 21 for the SIRKOM SRK-1080PW-A Player.

The following figure is an example, please refer to your user’s manual of router for opening ports.



**Step 4 :** Start IE on PC and type the FTP site or IP :

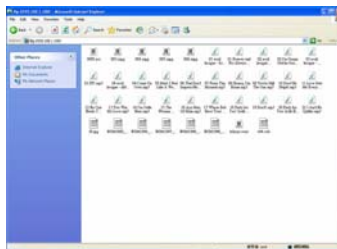
In the local PC, please type “**ftp://192.168.1.100**”.

In the remote PC, please type “**ftp://61.30.13.40:21**”.

**Step 5 :** Then type the “User Name” and “Password” and click “Log On” to log on to the SIRKOM SRK-1080PW-A Player Server. (Default User Name : **root** Default Password : **admin**)



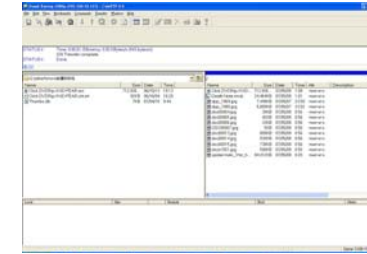
**Step 6 :** After logging on, all the media files in the CF card on the SIRKOM SRK-1080PW-A Player will be listed. You can download and upload the media files between CF card and your PC.



**NOTE :** After file being download/ upload will stop playing. After downloading files, the SIRKOM SRK-1080PW-A Player will display the movie files automatically.

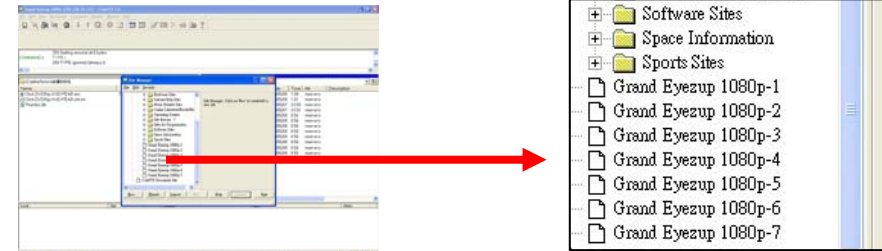
**Method 2 : Connect by FTP Tools Example.**

- If there are multiple SIRKOM SRK-1080PW-A Player, you can use the “**CuteFTP**” tool to connect and manage files easily.

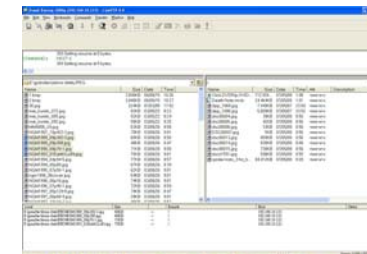


**CuteFTP**

- You can create all the SIRKOM SRK-1080PW-A Player, and only select the SIRKOM SRK-1080PW-A Player that you want to connect in the list.



- Select the files you want upload to the SIRKOM SRK-1080PW-A Player, or download the files to your PC.



**NOTE :** After file being download/ upload will stop playing. After downloading files, the SIRKOM SRK-1080PW-A Player will display the movie files automatically.

## 8.5 RS-232 FUNCTION (RS-232 cable is optional)

Use the tool “Hyper Terminal” or other tools to control the SIRKOM SRK-1080PW-A Player with ASCII command.

**NOTE.** 1. The available baud rates is 38400.

2. The reaction time of SRK-1080PW-A Player is around three seconds.



### Keyboard Layout

q : POWER	- : VOL -	w : SLOW
R : RETURN	* : MUTE	> : NEXT
! : REPEAT	S : SELECT	< : PREW
~ : SETUP	A : Auto Download	u : UP
# : TV MODE	p : PLAY	d : DOWN
% : AutoPlay	P : PAUSE/STEP	l : LEFT
i : INFO	x : STOP	r : RIGHT
m : NTSC/PAL	f : FFW	s : ENTER
\$ : SEARCH	b : REW	C : CLEAR
+ : VOL +	(XXXXX.XXX) : Play The File (xxxxx.xxx is the file name) NOTE : Must include the round brackets.	
(number): Play the file by index. (numbers < lowercase letter < upper case letters)		

### Pin Assignment

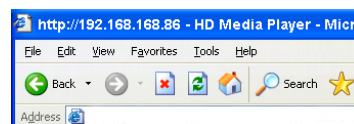
D Sub 9Pin Female	D Sub 9Pin Female
Pin 1	Pin 4
Pin 2	Pin 3
Pin 3	Pin 2
Pin 4	Pin 1
Pin 5	Pin 5
Pin 6	Pin 6
Pin 7	Pin 8
Pin 8	Pin 7
Pin 9	Pin 9

## 9. HTTP COMMAND FUNCTION

- Confirm that the SIRKOM SRK-1080PW-A Player is already connected to the network. (Refer to 7.1)
- Confirm the “Local HTTP Server” function has been enabled, and the “Local HTTP Server Setup” set has been completed (refer to 7.2).
- Set your router or firewall, and open a port 80 for the SIRKOM SRK-1080PW-A Player. The following figure is an example, please refer to your user’s manual of router for opening ports.



- Start IE on PC and type the HTTP site or IP :  
In the local PC, please type “http://192.168.1.100”.  
In the remote PC, please type “http://61.30.13.40:80”.
- Type the “User Name”, “Password” and click “OK” to log on. (Default User Name: root  
Default Password: admin)



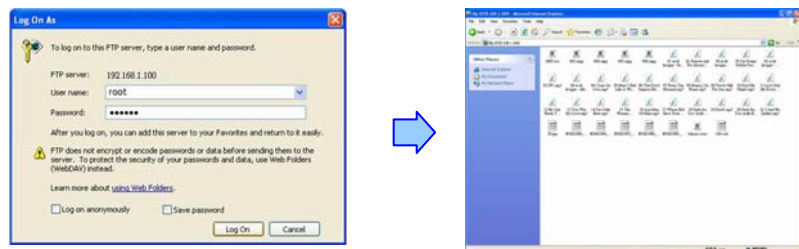
- There are three items: “Player Control”, “Network Setup” and “Timer Setup” in the window.



## 9.1 Player CONTROL



- **Check State:** Check the current state of SRK-1080PW-A Player.
- **Playback Control:** Control the SRK-1080PW-A Player to play file/ stop playback/ pause the playback/ play the previous file/ play the next file/ rewind movie/ forward movie.
- **Play File:** Enter the file name that you want play, and click “Send” to play the file immediately.
- **Repeat File:** Select the repeat mode.
- **Auto Download:** Click “Send” to execute the auto download function immediately.  
**Note:** The “FTP Auto Download” function must be turned on and completed set.
- **Stop Auto Download:** Click “Send” to stop the auto download function immediately.
- **Connect FTP Server:** Click the FTP server address to connect to the SRK-1080PW-A Player, and enter the user name and password (**Default User Name:** root, **Default Password:** admin) to log on. After logging on all the media files in the CF card on the SIRKOM SRK-1080PW-A Player will be listed. You can download and upload the media files between CF card and your PC.



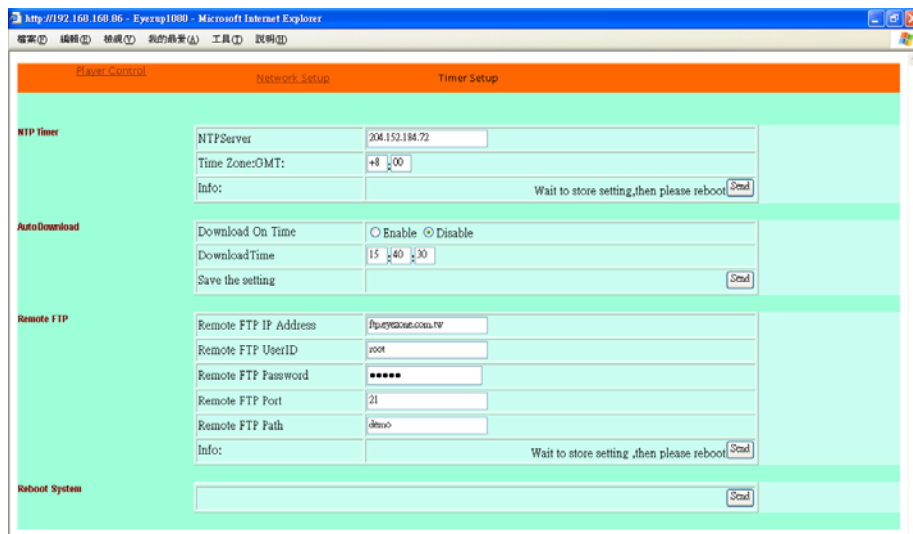
- **Volume Control:** Enter the value for volume (0-30).
- **Auto Play:** Select the auto play mode (movies/ pictures/ off).
- **Reboot System:** Click “Send” to reboot the SRK-1080PW-A Player immediately.

## 9.2 NETWORK SETUP



- **Network Interface:** Select your network connection Disable/ RJ45/ Wi-Fi.
- **DHCP:** Enable/ Disable the DHCP function.
- **IP Address:** Enter the fixed IP address, Mask, Gateway and DNS for the SIRKOM SRK-1080PW-A Player.
- **FTP Server:** Enable/ Disable the FTP Server function. You can also change the User ID, Password and port of the FTP Server.
- **HTTP Server:** Enable/ Disable the HTTP Server function. You can also change the User ID, Password and port of the HTTP Server.
- **Media Player 11:** Enable/ disable the Media Player 11 server.
- **WiFi Encryption Mode:** Disable/ enable the encryption function.
- **WiFi SSID:** You can modify the SSID name and password in this item.
- **Reboot System:** After setting, click “Send” to reboot the SRK-1080PW-A Player.

## 9.3 TIMER SETUP

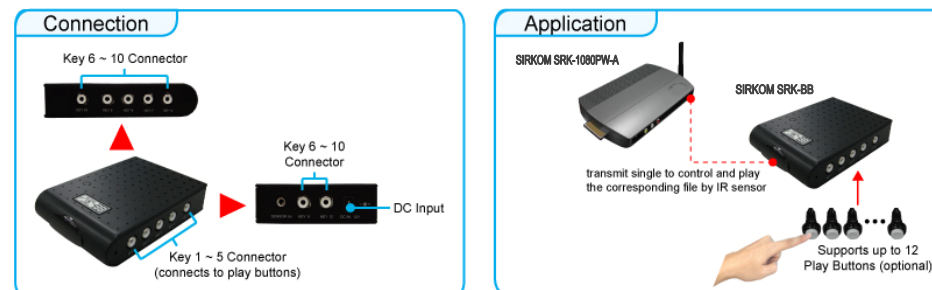


- **NTP Server:** Set the NTP Server.
- **Auto Download:** Set the auto download time.
- **Remote FTP:** Set the Remote FTP Server.
- **Reboot System:** After setting, click “Send” to reboot the SRK-1080PW-A Player.

## 10. OPTIONAL AUXILIARY EQUIPMENT

### 10.1 PLAY-BUTTON BOX (SIRKOM BBOX)

- The Play Button Box (SIRKOM BBOX) supports up to 12 play-button inputs.
- Press one of the play buttons to play the corresponding file.
- **Hardware Connection**
- **Play the Media File By the Play-Button**



#### ex. 5 Play-Buttons (supports up to 12 play buttons)

**Step 1 :** Put 6 demo files on CF card. (1 default file and 5 demo files)

**NOTE :** The files are sorted by filename in ascending order alphanumerically (numbers < lowercase letter < upper case letters). Each button is mapped to a file by this order.

#### For Example :

There are 6 demo files on the CF card. The file names are a01.xxx, 33.xxx, b55.xxx, 1abc.xxx, 07.xxx and A01.xxx ( xxx is extension of the file )

Default File : 07.xxx      Demo File 1 : 1abc.xxx      Demo File 2 : 33.xxx  
 Demo File 3 : a01.xxx      Demo File 4 : b55.xxx      Demo File 5 : A01.xxx

**Step 2 :** Insert the CF card to the SIRKOM SRK-1080PW-A Player, and the SIRKOM SRK-1080PW-A Player will play the default file automatically while powered on.

**Step 3 :** Press one of the buttons 1-5 to play the corresponding demo file.

**Step 4 :** The SIRKOM SRK-1080PW-A Player supports two options (Repeat Default / Repeat All) when the demo file finishes playing. The functions can be set in the setup menu. (Other Setup → Play Button)

- **Repeat Default :** SIRKOM SRK-1080PW-A Player will automatically play the default file when the demo file finishes playing.

- **Repeat All :** SIRKOM SRK-1080PW-A Player will automatically play all the demo files when the demo file finishes playing.

## 10.2 WIRELESS TOUCH-SENSOR BUTTONS

### 10.2.1 Features of the Wireless Touch-Sensor Buttons

- The number of touch-sensor buttons can be customized to 12, 24 or 36 for OEM project.
- Used with various operating environment (glass, plastics and acrylic material, except metal material), the thickness supports 3mm -5mm, and it can be customized to 5cm for OEM project.



### 10.2.2 Demo Files

#### Ex. Using the wireless 5 Touch-Sensor Buttons

- Put 6 demo files on CF card. ( 1 default file and 5 demo files )

**NOTE :** The files are sorted by filename in ascending order alphanumerically (numbers < lowercase letter < upper case letters). Each button is mapped to a file by this order.

#### For Example :

There are 6 demo files on the CF card. The file names are **a01.xxx**, **33.xxx**, **b55.xxx**, **1abc.xxx**,

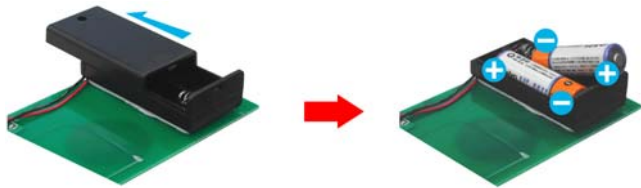
**07.xxx** and **A01.xxx**. ( xxx is extension of the file )

Default File : 07.xxx      Demo File 1 : 1abc.xxx      Demo File 2 : 33.xxx

Demo File 3 : a01.xxx      Demo File 4 : b55.xxx      Demo File 5 : A01.xxx

### 10.2.3 Wireless Touch-Sensor Buttons

- Open the battery cover and set the batteries (AA size) as shown below. Please note that the polarity of the battery.



### 10.2.4 Play the Demo Files

**Step 1 :** Insert the CF card to the SIRKOM SRK-1080PW-A Player, and the SIRKOM SRK-1080PW-A Player will play the default file automatically while powered on.

**Step 2 :** Press one of the wireless touch-sensor buttons 1-5 to play the corresponding demo file.

**Step 3 :** The SIRKOM SRK-1080PW-A Player supports two options (Repeat Default / Repeat All) when the demo file finishes playing. The functions can be set in the setup menu. (Other Setup → Play Button)

- **Repeat Default :** SIRKOM SRK-1080PW-A Player will automatically play the default file when the demo file finishes playing.

- **Repeat All :** SIRKOM SRK-1080PW-A Player will automatically play all the demo files when the demo file finishes playing.

## 11. TROUBLESHOOTING

Situation	Check Point
No Picture	<ol style="list-style-type: none"> <li>1. Check power cable and power switches.</li> <li>2. Ensure the video cables are connected between the Player and the SIRKOM SRK-1080PW-A Player.</li> <li>3. Press the “TV MODE” button on the remote control to select the correct output mode.</li> <li>4. Make sure the file format on the CF card is correct.</li> <li>5. Check if the display device is switched to correct video input source.</li> </ol>
No Response From the Remote Control	<ol style="list-style-type: none"> <li>1. Ensure that there are 2 batteries (AAA size) in the remote control and they are inserted the correctly.</li> <li>2. Check for any barrier between the remote control and the product.</li> </ol>
No sound	<ol style="list-style-type: none"> <li>1. Check if the mute function is on.</li> <li>2. Check if the volume is set properly.</li> <li>3. Check if audio cable has been connected correctly.</li> </ol>
No Responding while pressing the wireless touch – sensor buttons	<ol style="list-style-type: none"> <li>1. Confirm the polarity of the battery.</li> </ol>
Network Not Working	<ol style="list-style-type: none"> <li>1. Check your IP settings on the Network Setup page. (refer to 7.1)</li> <li>2. If using wired network, make sure the network cable is plugged in on both the SIRKOM SRK-1080PW-A Player and your network hub.</li> </ol>
Wireless Network Not Working	<ol style="list-style-type: none"> <li>1. Ensure that you have entered the correct WEP password for you access router.</li> <li>2. Ensure that you wireless router supports 802.11b/g.</li> <li>3. Adjust the wireless antennas for better signal reception.</li> </ol>